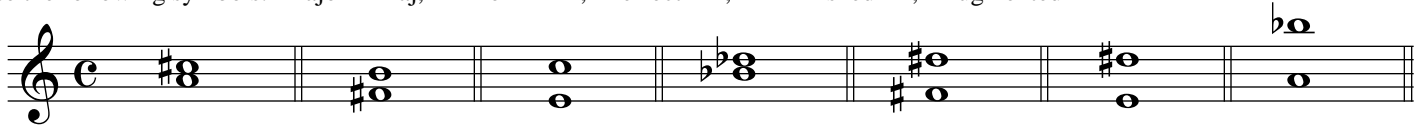


Sample Theory Test - Answer Key

PNW Film Scoring Program

Identify the following intervals' size and quality

Use the following symbols: Major = Maj, Minor = min, Perfect = P, Diminished = °, Augmented = +



Ex:Maj3

P4

min6

min3

Maj6

Maj7

min9



min2

°5

P5

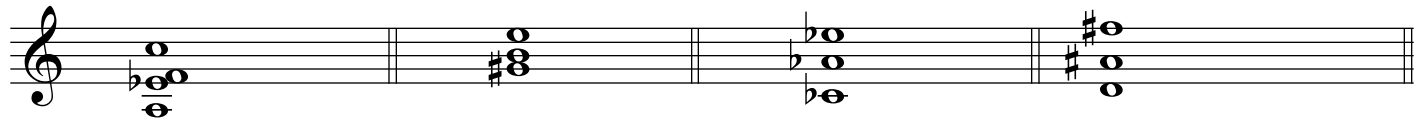
Maj2

+4

Maj7

min7

Identify the following chords (do not identify inversion, no figured bass notation):



Ex:F7

E

Abmin

D+ or A#+ or F#+



B°

EbMaj7

Fb6 or Dbmin7

A+7 or A7(#5)



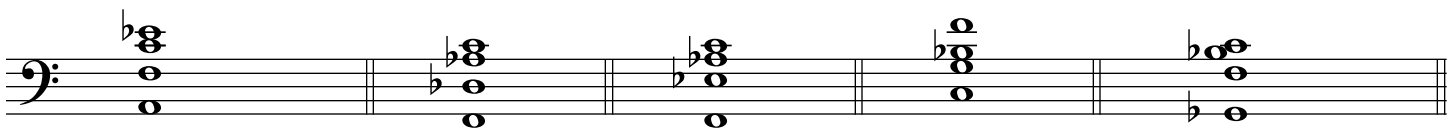
C#min7(b5) or Emin6

Cb7 or F°7 or Ab°7 or D°7

D7(b9)

GMaj9

Identify the following chords (identify inversions):



ExF7/A

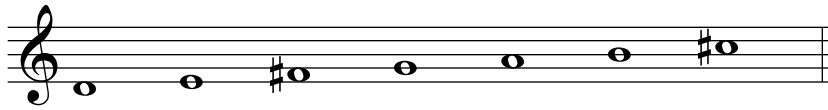
DbMaj7/F

Fmin7

C7sus4

GbMaj7(#11)

Write out the following scales using accidentals (not key signatures)



Ex: D Major



Db Major

E Major



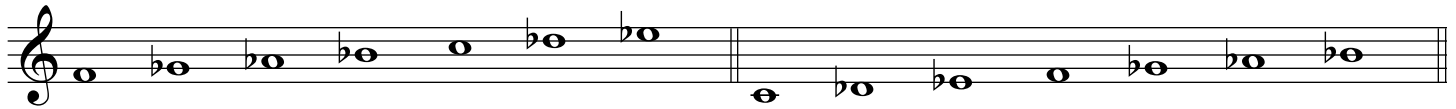
B Major

Ab Major

Add Accidentals to create the given modes



Ex: C Lydian



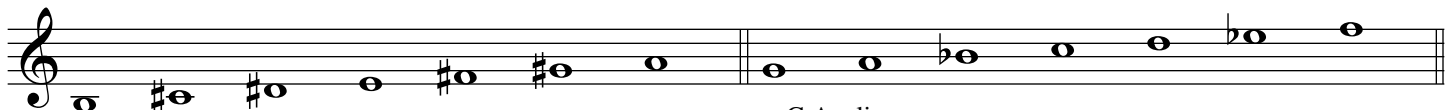
F Phrygian

C Locrian



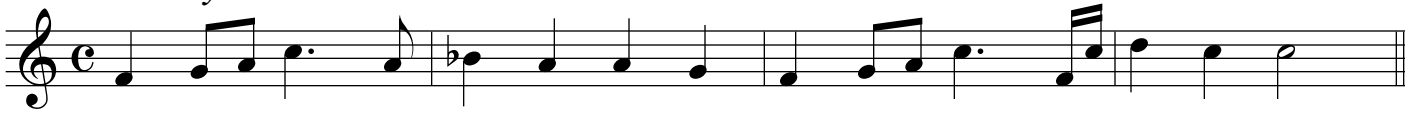
E Dorian

D Lydian

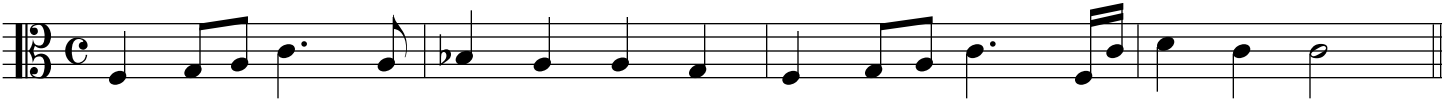


B Mixolydian

G Aeolian

Melody 1

Transpose Melody 1 down an octave into alto clef



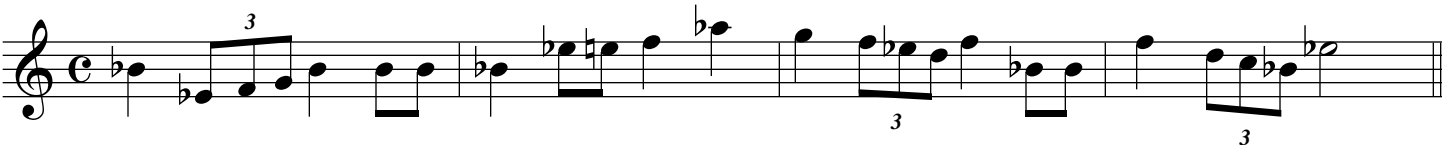
Transpose Melody 1 down two octaves into bass clef

*Melody 2*

Transpose Melody 2 up a Major 2nd using accidentals (not a key signature)

*Melody 3*

Transpose Melody 3 up a Perfect 5th using accidentals (not a key signature)



Melody 4

Transpose Melody 4 down a minor 3rd using accidentals (not a key signature)

Complete the following measures using rests

Rewrite the following rhythms correctly

Dictation: notate the melodies on the mp3s provided with this test - do not use an instrument to help.

Note: none of these melodies use triplets or contain rests.

The given small note is the reference pitch sounded at the beginning of each mp3 - not necessarily the first note

Dictation 1



Dictation 2



Dictation 3

